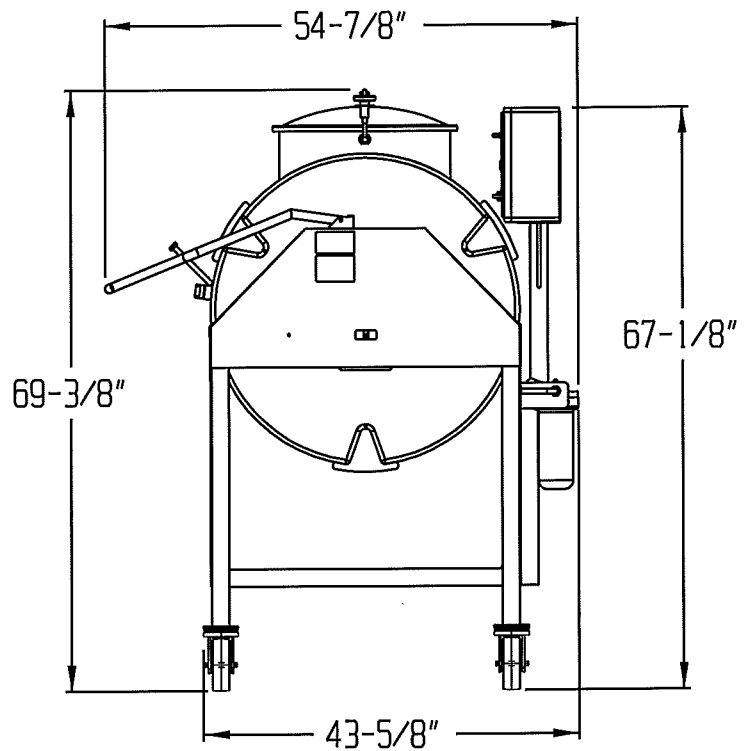
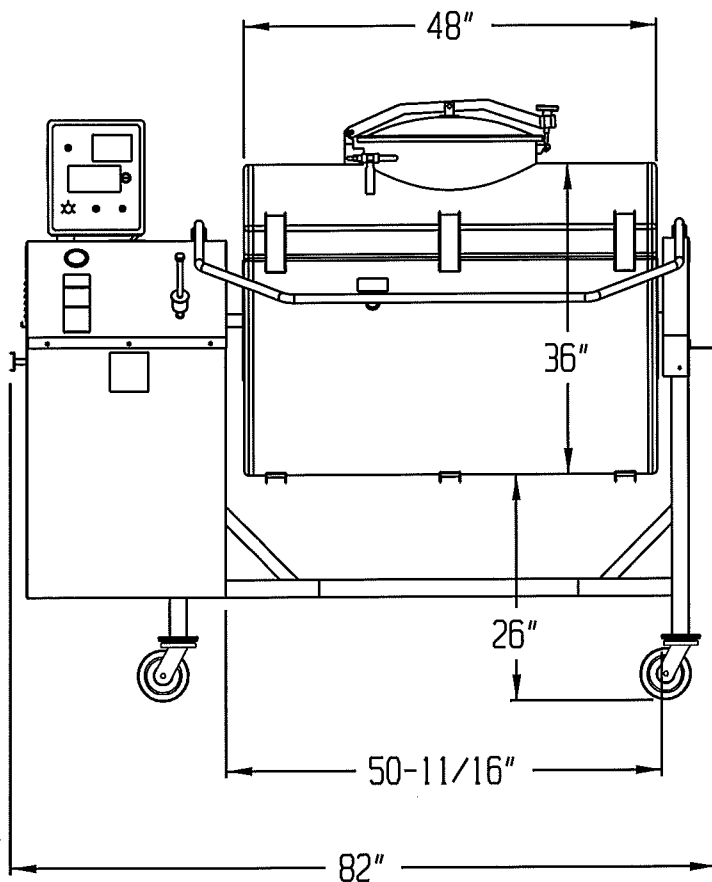


DANIELS FOOD EQUIPMENT

DVTS 1000 DD TUMBLER



SPECIFICATIONS

TOTAL POWER INPUT:	STANDARD; 208/230 VOLT, 15.6 AMP, 3 PHASE 60 HZ
TUMBLER DRIVE:	VARIABLE SPEED 4-12.2 RPM, FWD/OFF/REV
DRIVE MOTOR:	3 HP
VACUUM PUMP:	3/4 HP
TOUCH SCREEN TIMER:	HOURS, MINUTES, BATCH COUNTING
ELECTRONIC CONTROLS:	TUMBLER SPEED-ADJUSTABLE 4-12.2 RPM. "JOG"- "RUN" TOGGLE SWITCH, FWD/OFF/REV TOGGLE SWITCH, TUMBLER "START"- "STOP" TOGGLE SWITCH, VACUUM PUMP "START"- "STOP" TOGGLE SWITCH
MAXIMUM CAPACITY:	1100-LBS.
WEIGHT:	951-LBS. (NET)
SHIPPING WEIGHT:	APPROXIMATELY 1,100 LBS.

DANIELS FOOD EQUIPMENT

310 NORTH CLAYBORN AVE. PARKERS PRAIRIE, MN. 56361 PHONE: (218) 338-5000 FAX (218) 338-5909.
WEB: www.danielsfood.com E-MAIL: danielsfood@midwestinfo.net