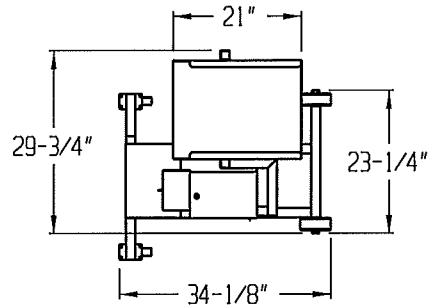
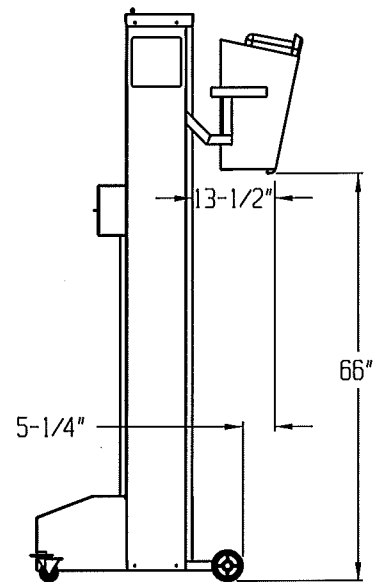
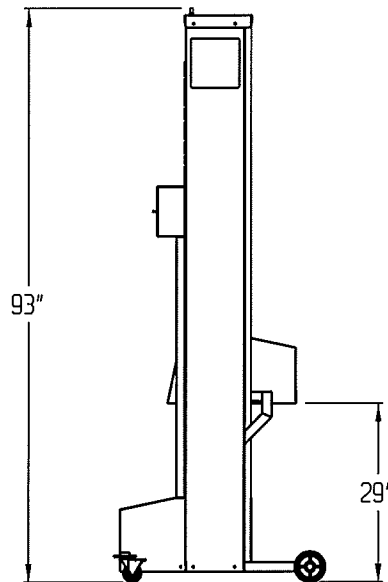
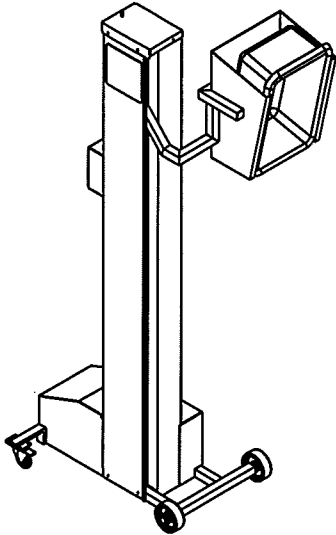


DANIELS FOOD EQUIPMENT

TOTE DUMP



MINIMUM CEILING HEIGHT
REQUIRED IS 104"



SPECIFICATIONS

- MOTOR:** 1/2 HP, 115 VOLTS, 8.8 AMPS, SINGLE PHASE, 60 CYCLE
- FRAME:** HEAVY GAUGE STAINLESS STEEL CONSTRUCTION
- LIFT CAPACITY:** UP TO 100 LBS. Dump Height 66"
- WEIGHT:** 510 LBS. SHIPPING WEIGHT.

DANIELS FOOD EQUIPMENT

310 NORTH CLAYBORN AVE. PARKERS PRAIRIE, MN. 56361 PHONE: (218) 338-5000 FAX (218) 338-5909.

WEB: www.danielsfood.com E-MAIL: danielsfood@midwestinfo.net