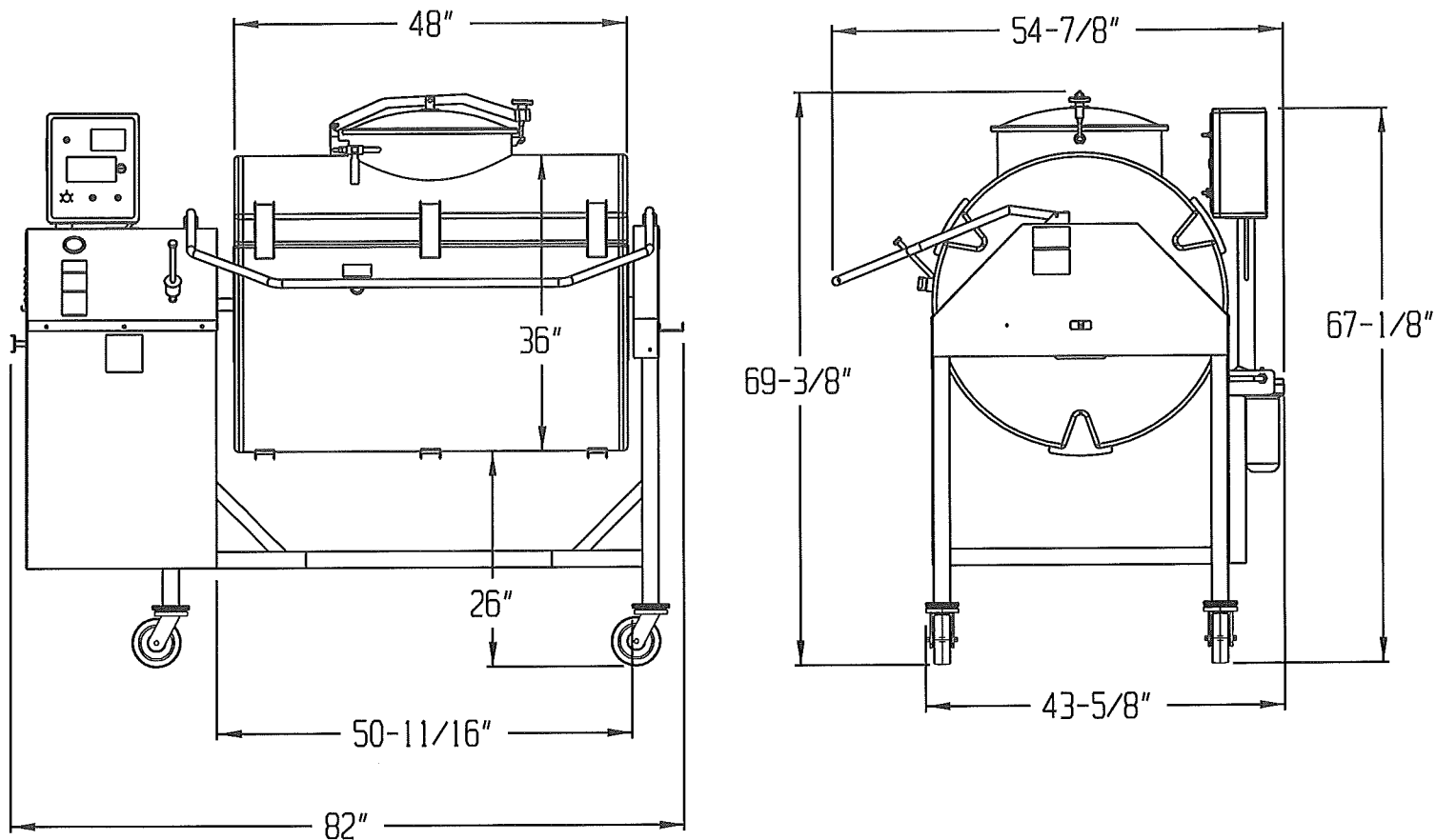


# **DANIELS FOOD EQUIPMENT**

## **DVTS 1000 DD TUMBLER**



### **SPECIFICATIONS**

<b>TOTAL POWER INPUT:</b>	STANDARD; 208/230 VOLT, 15.6 AMP, 3 PHASE 60 HZ
<b>TUMBLER DRIVE:</b>	VARIABLE SPEED 4-12.2 RPM, FWD/OFF/REV
<b>DRIVE MOTOR:</b>	3 HP
<b>VACUUM PUMP:</b>	¼ HP
<b>TOUCH SCREEN TIMER:</b>	HOURS, MINUTES, BATCH COUNTING
<b>ELECTRONIC CONTROLS:</b>	TUMBLER SPEED-ADJUSTABLE 4-12.2 RPM. "JOG"- "RUN" TOGGLE SWITCH, FWD/OFF/REV TOGGLE SWITCH, TUMBLER "START"- "STOP" TOGGLE SWITCH, VACUUM PUMP "START"- "STOP" TOGGLE SWITCH
<b>MAXIMUM CAPACITY:</b>	1400-LBS.
<b>WEIGHT:</b>	951-LBS. (NET)
<b>SHIPPING WEIGHT:</b>	APPROXIMATELY 1,100 LBS.

MMYB Inc. dba

### **DANIELS FOOD EQUIPMENT**

310 NORTH CLAYBORN AVE. PARKERS PRAIRIE, MN. 56361 PHONE: (218) 338-5000 FAX (218) 338-5909.

WEB: [www.danielsfood.com](http://www.danielsfood.com)

E-MAIL: [danielsfood@midwestinfo.net](mailto:danielsfood@midwestinfo.net)

7/19/2016